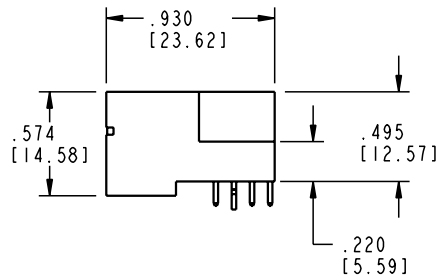
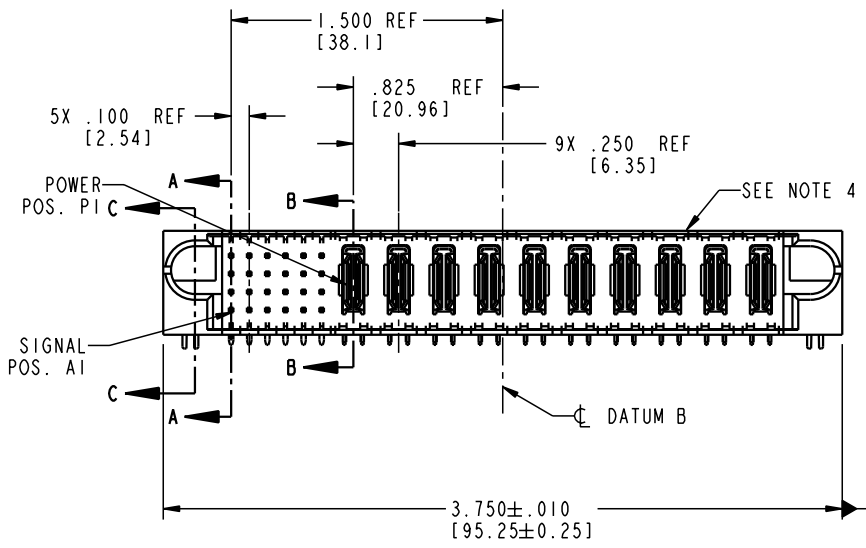
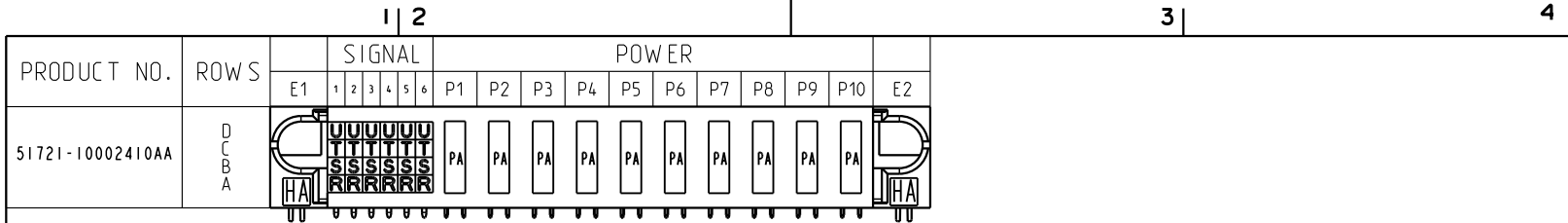


Tous droits strictement réservés. Reproduction ou communication o des liers interdite sous quelque forme que ce soit sans autorisation écrite du propriétaire. Propriete de c FCI. Droits de reproduction FCI.

All rights strictly reserved. Reproduction or issue to third parties in any form whatever is not permitted without written authority from the proprietor. Property of FCI. Copyright FCI.



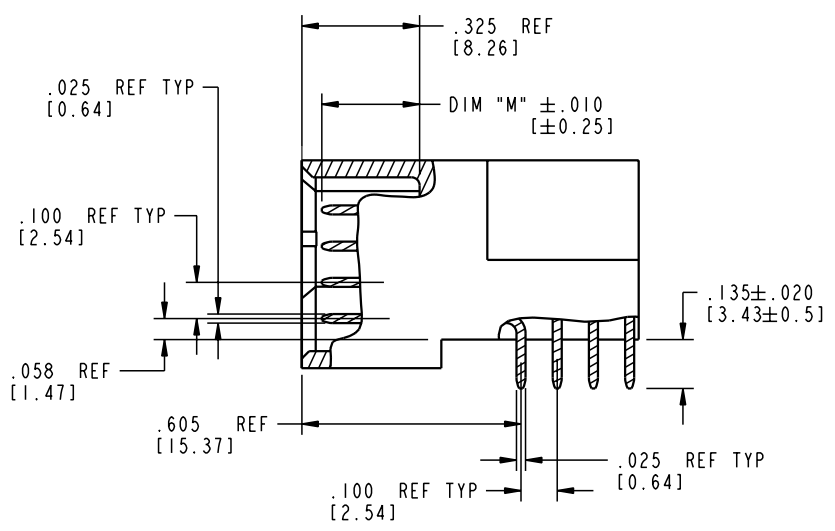
CODE	DIM "M" MATING LENGTH	CONTACT TYPE
R	.270 [6.86]	SIGNAL
S	.270 [6.86]	SIGNAL
T	.270 [6.86]	SIGNAL
U	.270 [6.86]	SIGNAL
PA	N/A [N/A]	POWER
HA	N/A [N/A]	HOLD-DOWN

mat'l code SEE NOTE 2				tolerances unless otherwise specified		CUSTOMER		 www.fciconnect.com	
ltr	ecn no.	dr	date	linear	.XX±.01/0.XX±0.3	COPY		title	
A	V03-0490	MEM	5/2/03	angles	.XXX±.005/0.XX±0.13	 INCH/MM		24S + 10P RIGHT ANGLE SOLDER HEADER	
				dr	M. MOSTOLLER 5/2/03	 scale 1:1		product family PwrBlade code 213	
				enrg	M. MOSTOLLER 5/2/03	size		dwg no 51721-10002410AA sheet 1 of 4	
				chr	H. BREWBAKER 5/2/03	A			
				appd	M. MOSTOLLER 5/2/03				
sheet index	revision sheet	A 1	A 2	A 3	A 4			cage code 22526	

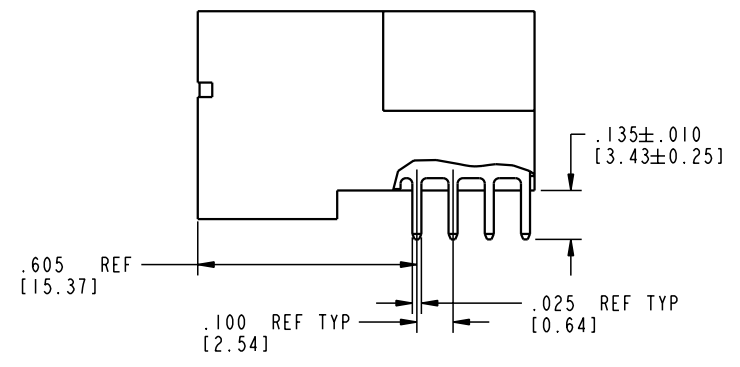
Tous droits strictement réservés. Reproduction ou communication o des tiers interdite sous quelque forme que ce soit sans autorisation écrite du propriétaire. Propriete de c FCI. Droits de reproduction FCI.

All rights strictly reserved. Reproduction or issue to third parties in any form whatever is not permitted without written authority from the proprietor. Property of FCI. Copyright FCI.

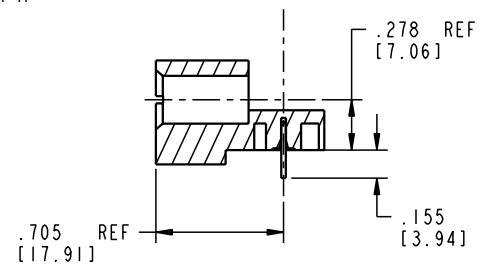
PRODUCT NUMBER
51721-10002410AA



BROKEN-OUT SECTION A-A
SCALE 2:1



BROKEN-OUT SECTION B-B
SCALE 2:1



SECTION C-C

mat'l code				SEE NOTE 2		tolerances unless otherwise specified		CUSTOMER		 www.fciconnect.com	
ltr	ecn no.	dr	date	linear	.XX±.01/0.XX±0.3	projection				title	
A				angles	.XXX±.005/0.XX±0.13					24S + 10P	
				dr	.XXX±.0020/0.XXX±0.051	INCH/MM		product family		code	
				enr	0 ± 7°	scale		PwrBlade		213	
				chr		1:1		size		sheet	
				appd				A		2 of 4	
sheet index		revision sheet		dr M. MOSTOLLER 5/2/03 engr M. MOSTOLLER 5/2/03 chr H. BREWBAKER 5/2/03 appd M. MOSTOLLER 5/2/03				A 51721-10002410AA			

cage code 22526

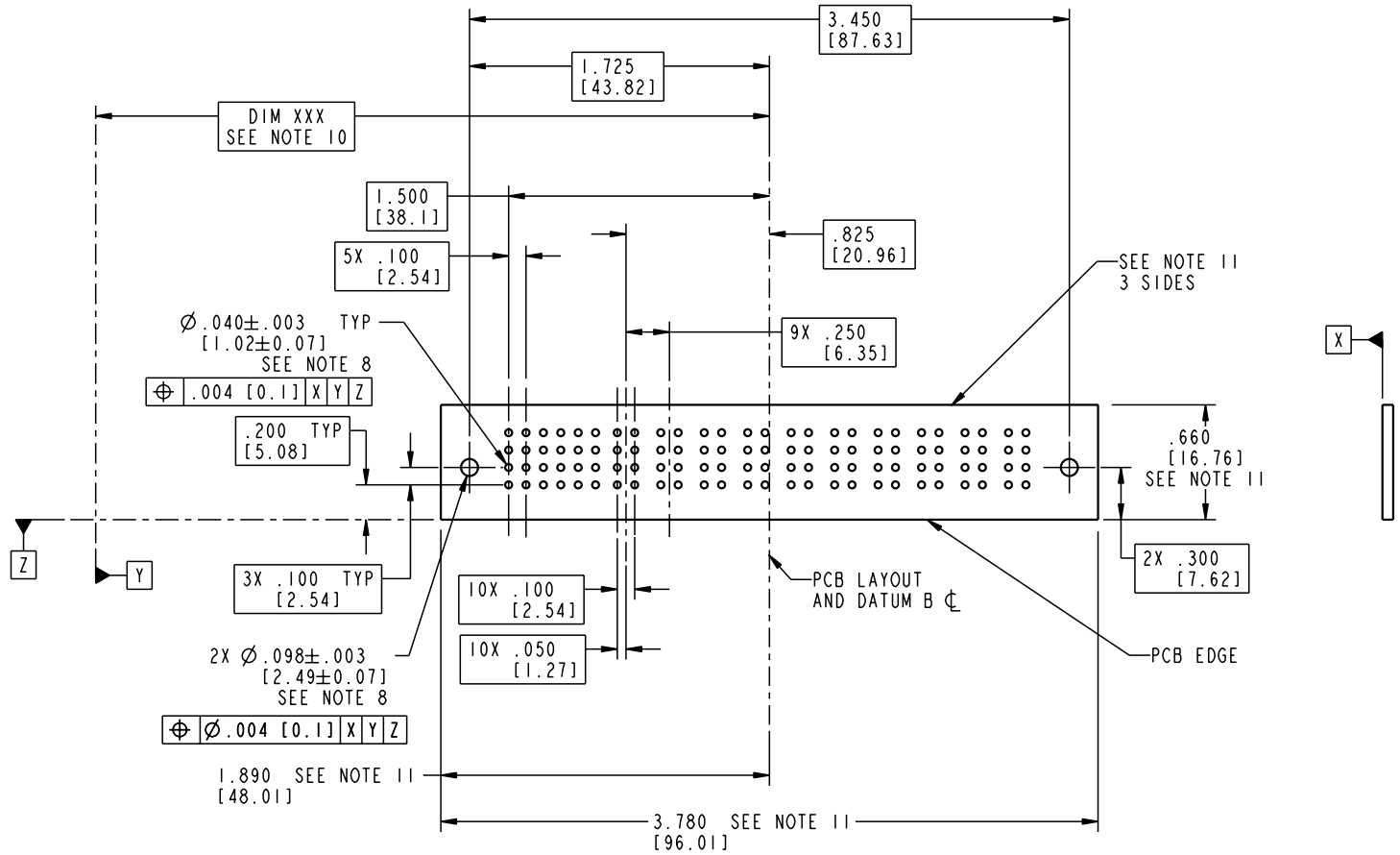
Pro/E

Tous droits strictement réservés. Reproduction ou communication o des liers inéridite sous quelque forme que ce soit sans autorisation écrite du propriétaire. Propriete de c FCI. Droits de reproduction FCI.

All rights strictly reserved. Reproduction or issue to third parties in any form whatever is not permitted without written authority from the proprietor. Property of FCI. Copyright FCI.



PRODUCT NUMBER
51721-10002410AA



RECOMMENDED PCB LAYOUT

mat'l code SEE NOTE 2				tolerances unless otherwise specified		CUSTOMER		www.fciconnect.com	
ltr	ecn no.	dr	date	linear	.XX±.01/0.XX±0.3	COPY		title	
A				angles	.XXX±.005/0.XX±0.13	projection		24S + 10P	
				dr	.XXX±.0020/0.XX±0.051			RIGHT ANGLE SOLDER HEADER	
				enr	0°±	INCH/MM		product family	
				chr		scale		PwrBlade	
				appd		1:1		code	
sheet index		revision sheet						213	
								sheet	
								3 of 4	

cage code 22526

Pro/E

Tous droits strictement réservés. Reproduction ou communication o des tiers interdite sous quelque forme que ce soit sans autorisation écrite du propriétaire. Propriete de c FCI. Droits de reproduction FCI.

All rights strictly reserved. Reproduction or issue to third parties in any form whatever is not permitted without written authority from the proprietor. Property of FCI. Copyright FCI.



PRODUCT NUMBER
51721-10002410AA

NOTES:

1. DIMENSIONS AND TOLERANCES ARE IN ACCORDANCE WITH ASME Y14.5M, 1994 UNLESS OTHERWISE SPECIFIED.

CONNECTOR NOTES:

- 2. HOUSING MATERIAL: UL 94 V-0 GLASS FILLED
HIGH-TEMP THERMOPLASTIC
POWER CONTACT MATERIAL: COPPER ALLOY
SIGNAL PIN MATERIAL: COPPER ALLOY
- 3. PLATING:
SIGNAL PINS: 30u"/0.76um Au OVER 50u"/1.27um Ni
POWER CONTACTS: 50u"/1.27um Ni UNDER ALL
WITH 30u"/0.76um Au ON CONTACT AREA
AND SnPb ON PCB INTERFACE

4. MANUFACTURER'S NAME, P/N, AND DATE CODE TO APPEAR ON THIS SURFACE.

5. PRODUCT SPECIFICATION GS-12-149.
APPLICATION SPECIFICATION BUS-20-067.

6. PACKAGED IN TRAYS.

PCB NOTES:

7. ALL HOLE DIAMETERS ARE FINISHED HOLE SIZE.

8. MOUNTING HOLES, WHERE APPLICABLE, ARE UNPLATED.

9. $\varnothing .0453 \pm .0010$ [1.151 \pm 0.025] DRILLED HOLES PLATED WITH .0003 [0.008] MIN SnPb OVER .001 [0.03] TO .003 [0.08] Cu PLATING TO ACHIEVE $\varnothing .040 \pm .003$ [1.02 \pm .07] HOLE.

10. "DIM XXX" TO BE DETERMINED BY THE CUSTOMER.

11. CONNECTOR KEEP-OUT ZONE.

mat'l code				SEE NOTE 2		tolerances unless otherwise specified		CUSTOMER		www.fciconnect.com	
ltr	ecn no.	dr	date	linear	.XX±.01/0.X±0.3	projection		title			
A				angles	.XXX±.005/0.XX±0.13			24S + 10P			
				dr	.XXX±.0020/0.XX±0.051	INCH/MM		product family		code	
				enr	0° ± 7°	scale		PwrBlade		213	
				chr	M. MOSTOLLER 5/2/03	1:1		size		sheet	
				appd	M. MOSTOLLER 5/2/03			51721-10002410AA		4 of 4	
sheet index		revision sheet									

1 | 2

3 |

4

1 | 2

Pro/E

3 |

cage code 22526

4